

LEGEND - Non bearing Wall

1 HOUR FIRE-RESISTANCE RATING - ULC W605

Equivalent Opening Factor at 2 h (F_{EO}) = 0.02

- 1) 26ga (0.46mm) EXTERIOR CLADDING
- 2) U CHANNEL
- 3) MINERAL WOOL INSULATION
- 4) 18ga (1.22mm) GIRT STRUCTURAL SUPPORT
- 5) CERAMIC FIBER STRIP
- 6) 24ga (0.61mm) LINER PANEL

2 HOUR FIRE-RESISTANCE RATING - ULC W606

- 1) 24ga (0.61mm) EXTERIOR CLADDING
- 2) U CHANNEL
- 3) MINERAL WOOL INSULATION
- 4) 18ga (1.22mm) GIRT STRUCTURAL SUPPORT
- 5) CERAMIC FIBER STRIP
- 6) 24ga (0.61mm) LINER PANEL

THE FIREGUARD WALL SYSTEM IS BASED ON A ULC DESIGNATED NON-LOAD BEARING FIRE RATED WALL SYSTEM DESIGNED WITH THE STEEL CLADDING ENCLOSING A MINERAL WOOL INSULATION THAT PROVIDES A 1 OR 2 HOUR FIRE RATED WALL. Testing based on CAN/ULC-S101 Standard Fire Endurance Tests of Building Construction Material.

ONE-HOUR FIRE RATED WALL ASSEMBLY (MEETS ULC DESIGN NO. W605)

- * 26 GAUGE (0.46mm) MINIMUM EXTERIOR WALL PANEL C/W TEK SCREWS AT 12" (305mm) O.C. AND STITCH SCREWS AT 12" (305mm) O.C.
- * GIRT STRUCTURAL SUPPORT MINIMUM 18ga (1.22mm) NOMINAL THICKNESS.
- * GIRT SPACING OF 48" (1220mm) TO MATCH MINERAL WALL BATT SIZE OR TO A MAXIMUM OF 60" (1524mm) O.C.
- * 1/2" (13mm) CERAMIC FIBER STRIP LOCATED ON OUTSIDE GIRT FACE (FLANGE)
- * 24 GAUGE (0.61mm) MINIMUM FULL HEIGHT LINER PANEL WITH MASTIC SEALER TAPE ON SEAM LINES AND ENDS, C/W TEK SCREWS AT 12" (305mm) O.C. AND STITCH SCREWS AT 12" (305mm) O.C.

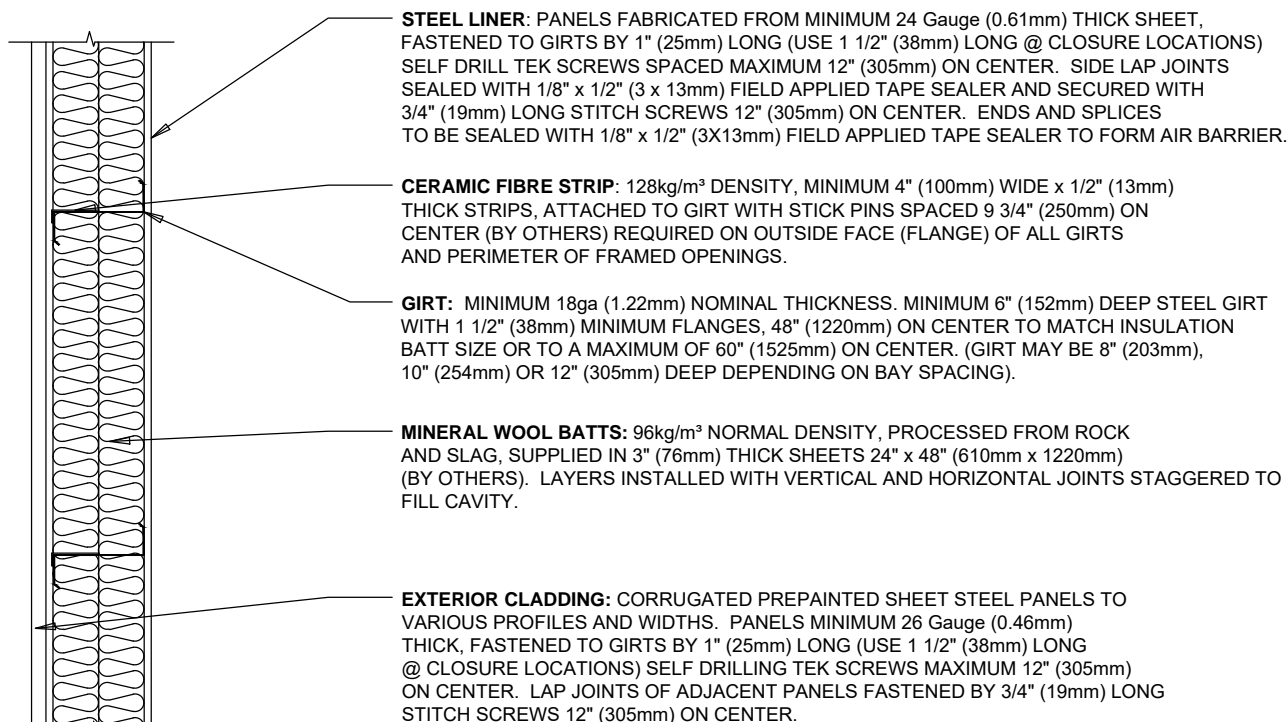
TWO-HOUR FIRE RATED WALL ASSEMBLY (MEETS ULC DESIGN NO. W606)

- * 24 GAUGE (0.61mm) MINIMUM EXTERIOR WALL PANEL C/W TEK SCREWS AT 12" (305mm) O.C. AND STITCH SCREWS AT 12" (305mm) O.C.
- * GIRT STRUCTURAL SUPPORT MINIMUM 18ga (1.22mm) NOMINAL THICKNESS.
- * GIRT SPACING OF 48" (1220mm) TO MATCH MINERAL WOOL BATT SIZE OR TO A MAXIMUM OF 60" (1524mm) O.C.
- * 1/2" (13mm) CERAMIC FIBER STRIP LOCATED ON OUTSIDE GIRT FACE (FLANGE)
- * 24 GAUGE (0.61mm) MINIMUM FULL HEIGHT LINER PANEL WITH MASTIC SEALER TAPE ON SEAM LINES AND ENDS, C/W TEK SCREWS AT 12" (305mm) O.C. AND STITCH SCREWS AT 12" (305mm) O.C.

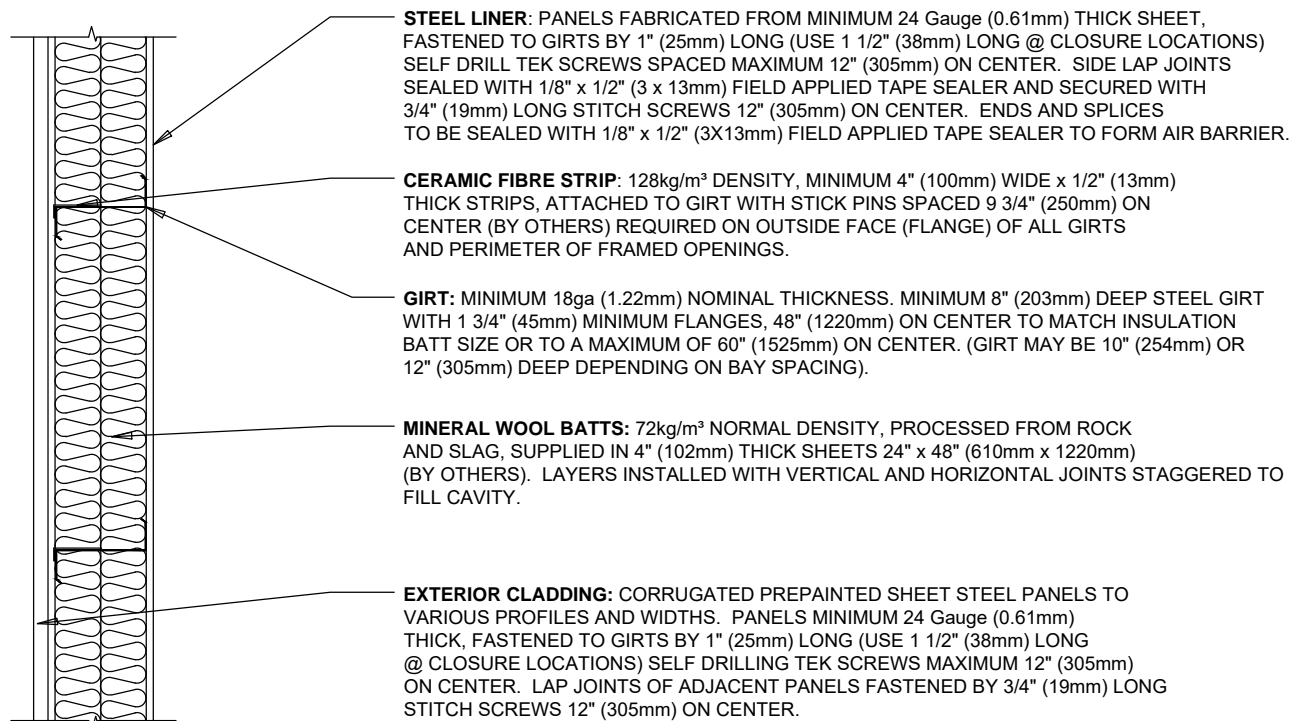
NOTES:

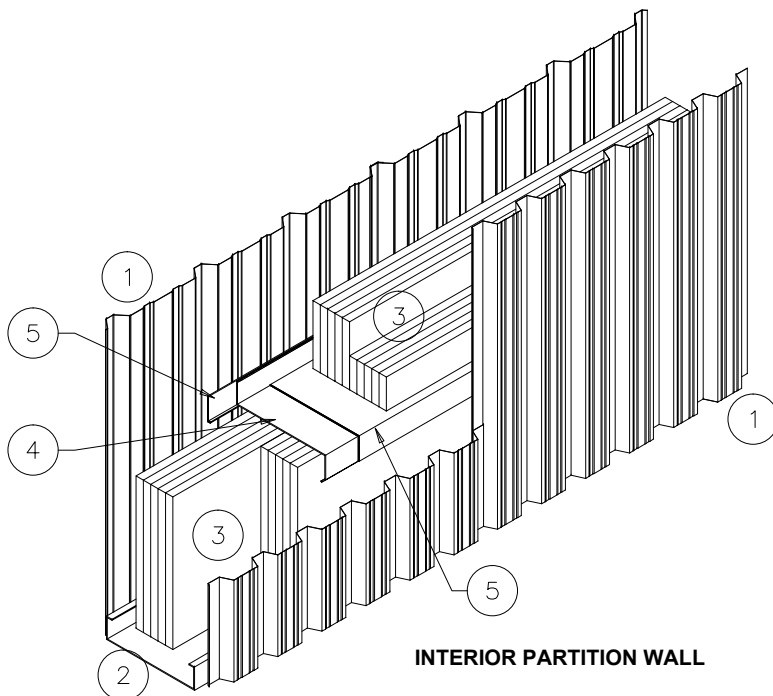
- Design No. W605 1 h can be used with an Equivalent Opening Factor at 2 h (F_{EO}) = 0.02
- See CSSBI FPB-20: Fire Protection Bulletin #20: Fire-Rated Exterior Sheet Steel Walls & FPB-24: Fire Protection Bulletin #24: New (and Better) Limiting Distance Requirements in 1995 NBCC, for additional information on Limiting Distance Requirements for NBCC
- Thermal modeling of fire rated assemblies completed - See MH Building Envelope Thermal Bridging Guide, for Zones based on NECB & CSSBI-B20-15 Thermal Transmittance of Insulated Sheet Steel Wall and Roof Assemblies
- See UL Product IQ BXUVC for other assemblies, including: bearing exterior walls; Design No. U418 & U425 and interior partitions; Design No. W610 1h & W611 2h

ONE-HOUR FIRE RATED WALL ASSEMBLY (MEETS ULC DESIGN NO. W605)



TWO-HOUR FIRE RATED WALL ASSEMBLY (MEETS ULC DESIGN NO. W606)





**LEGEND - Non bearing
Interior Partition Wall**

1 HOUR FIRE-RESISTANCE RATING - ULC W610

Fire side at either side of partition

- 1) 24ga (0.61mm) EXTERIOR CLADDING
- 2) U CHANNEL
- 3) MINERAL WOOL INSULATION
- 4) 18ga (1.22mm) GIRT STRUCTURAL SUPPORT
- 5) CERAMIC FIBER STRIP
- 6) 24ga (0.61mm) LINER PANEL

2 HOUR FIRE-RESISTANCE RATING - ULC W611

Fire side at either side of partition

- 1) 22ga (0.76mm) EXTERIOR CLADDING
- 2) U CHANNEL
- 3) MINERAL WOOL INSULATION
- 4) 18ga (1.22mm) GIRT STRUCTURAL SUPPORT
- 5) CERAMIC FIBER STRIP
- 6) 22ga (0.76mm) LINER PANEL

THE FIREGUARD WALL SYSTEM IS BASED ON A ULC DESIGNATED NON-LOAD BEARING FIRE RATED WALL SYSTEM DESIGNED WITH THE STEEL CLADDING ENCLOSING A MINERAL WOOL INSULATION THAT PROVIDES A 1 OR 2 HOUR FIRE RATED INTERIOR PARTITION WALL. Test based on CAN/ULC-S101 Standard Fire Endurance Tests for Building Construction Material.

ONE-HOUR FIRE RATED WALL ASSEMBLY (MEETS ULC DESIGN NO. W610)

- * 24 GAUGE (0.61mm) MINIMUM LINER PANEL WITH MASTIC SEALER TAPE ON SEAM LINES AND ENDS, C/W TEK SCREWS AT 12" (305mm) O.C. AND STITCH SCREWS AT 12" (305mm) O.C.
- * GIRT STRUCTURAL SUPPORT MINIMUM 18ga (1.22mm) NOMINAL THICKNESS.
- * GIRT SPACING OF 48" (1220mm) TO MATCH MINERAL WALL BATT SIZE OR TO A MAXIMUM OF 60" (1525mm) O.C.
- * CERAMIC FIBER STRIP INSTALLED TO ENVELOP THE TOP SURFACE AND BOTH GIRT FACES (FLANGES) OF THE GIRT
- * 24 GAUGE (0.61mm) MINIMUM LINER PANEL WITH MASTIC SEALER TAPE ON SEAM LINES AND ENDS, C/W TEK SCREWS AT 12" (305mm) O.C. AND STITCH SCREWS AT 12" (305mm) O.C.

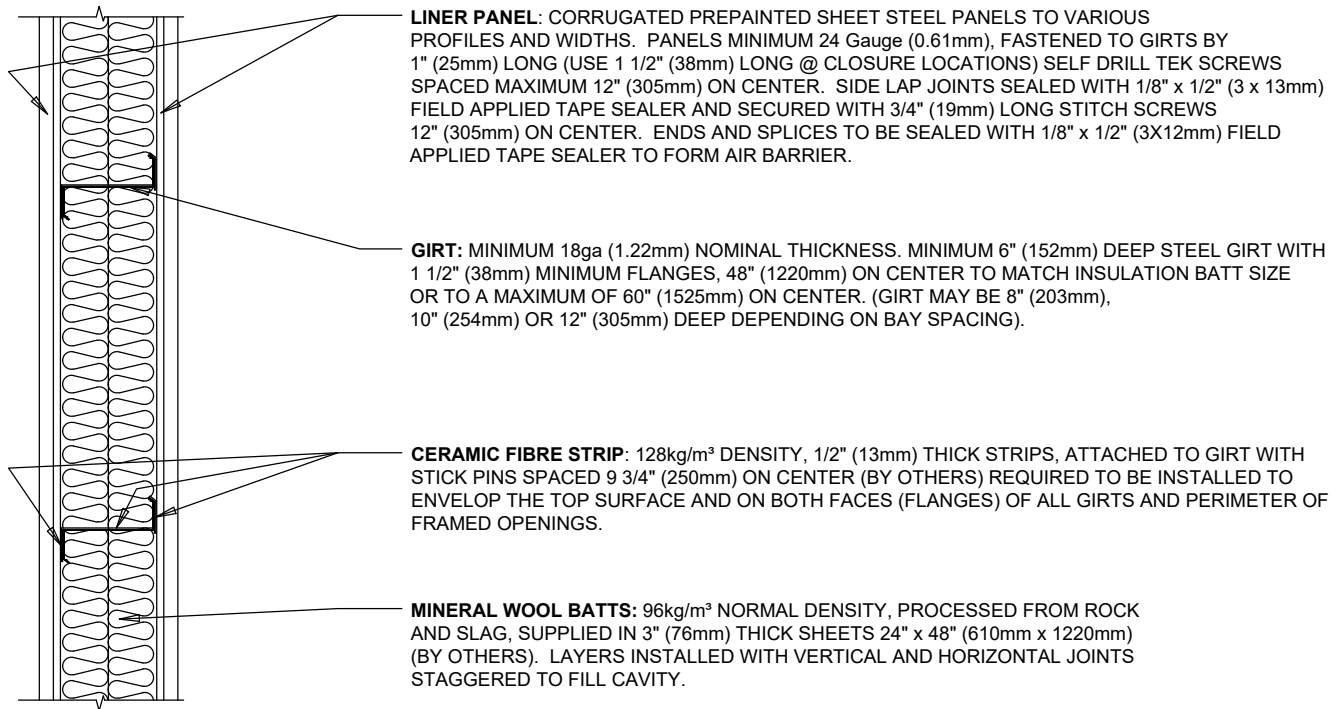
TWO-HOUR FIRE RATED WALL ASSEMBLY (MEETS ULC DESIGN NO. W611)

- * 22 GAUGE (0.76mm) MINIMUM LINER PANEL WITH MASTIC SEALER TAPE ON SEAM LINES AND ENDS, C/W TEK SCREWS AT 12" (305mm) O.C. AND STITCH SCREWS AT 12" (305mm) O.C.
- * GIRT STRUCTURAL SUPPORT MINIMUM 18ga (1.22mm) NOMINAL THICKNESS.
- * GIRT SPACING OF 48" (1220mm) TO MATCH MINERAL WOOL BATT SIZE OR TO A MAXIMUM OF 60" (1525mm) O.C.
- * CERAMIC FIBER STRIP INSTALLED TO ENVELOP THE TOP SURFACE AND BOTH GIRT FACES (FLANGES) OF THE GIRT
- * 22 GAUGE (0.76mm) MINIMUM LINER PANEL WITH MASTIC SEALER TAPE ON SEAM LINES AND ENDS, C/W TEK SCREWS AT 12" (305mm) O.C. AND STITCH SCREWS AT 12" (305mm) O.C.

NOTES:

- See UL Product IQ BXUVC for other assemblies, including; Design No. W605 1h & W606 2h for exterior walls, Design No. W447 for 1h & 2h Interior Drywall Partitions

ONE-HOUR FIRE RATED PARTITION WALL ASSEMBLY (MEETS ULC DESIGN NO. W610)



TWO-HOUR FIRE RATED PARTITION WALL ASSEMBLY (MEETS ULC DESIGN NO. W611)

