

**LEGEND - Non bearing Wall**

**1 HOUR FIRE-RESISTANCE RATING - ULC W605**

Equivalent Opening Factor at 2 h ( $F_{EO}$ ) = 0.02

- 1) 26ga (0.46mm) EXTERIOR CLADDING
- 2) U CHANNEL
- 3) MINERAL WOOL INSULATION
- 4) 18ga (1.22mm) GIRT STRUCTURAL SUPPORT
- 5) CERAMIC FIBER STRIP
- 6) 24ga (0.61mm) LINER PANEL

**2 HOUR FIRE-RESISTANCE RATING - ULC W606**

- 1) 24ga (0.61mm) EXTERIOR CLADDING
- 2) U CHANNEL
- 3) MINERAL WOOL INSULATION
- 4) 18ga (1.22mm) GIRT STRUCTURAL SUPPORT
- 5) CERAMIC FIBER STRIP
- 6) 24ga (0.61mm) LINER PANEL

**THE FIREGUARD WALL SYSTEM IS BASED ON A ULC DESIGNATED NON-LOAD BEARING FIRE RATED WALL SYSTEM DESIGNED WITH THE STEEL CLADDING ENCLOSING A MINERAL WOOL INSULATION THAT PROVIDES A 1 OR 2 HOUR FIRE RATED WALL. Testing based on CAN/ULC-S101 Standard Fire Endurance Tests of Building Construction Material.**

**ONE-HOUR FIRE RATED WALL ASSEMBLY** (MEETS ULC DESIGN NO. W605)

- \* 26 GAUGE (0.46mm) MINIMUM EXTERIOR WALL PANEL C/W TEK SCREWS AT 12" (305mm) O.C. AND STITCH SCREWS AT 12" (305mm) O.C.
- \* GIRT STRUCTURAL SUPPORT MINIMUM 18ga (1.22mm) NOMINAL THICKNESS.
- \* GIRT SPACING OF 48" (1220mm) TO MATCH MINERAL WALL BATT SIZE OR TO A MAXIMUM OF 60" (1524mm) O.C.
- \* 1/2" (13mm) CERAMIC FIBER STRIP LOCATED ON OUTSIDE GIRT FACE (FLANGE)
- \* 24 GAUGE (0.61mm) MINIMUM FULL HEIGHT LINER PANEL WITH MASTIC SEALER TAPE ON SEAM LINES AND ENDS, C/W TEK SCREWS AT 12" (305mm) O.C. AND STITCH SCREWS AT 12" (305mm) O.C.

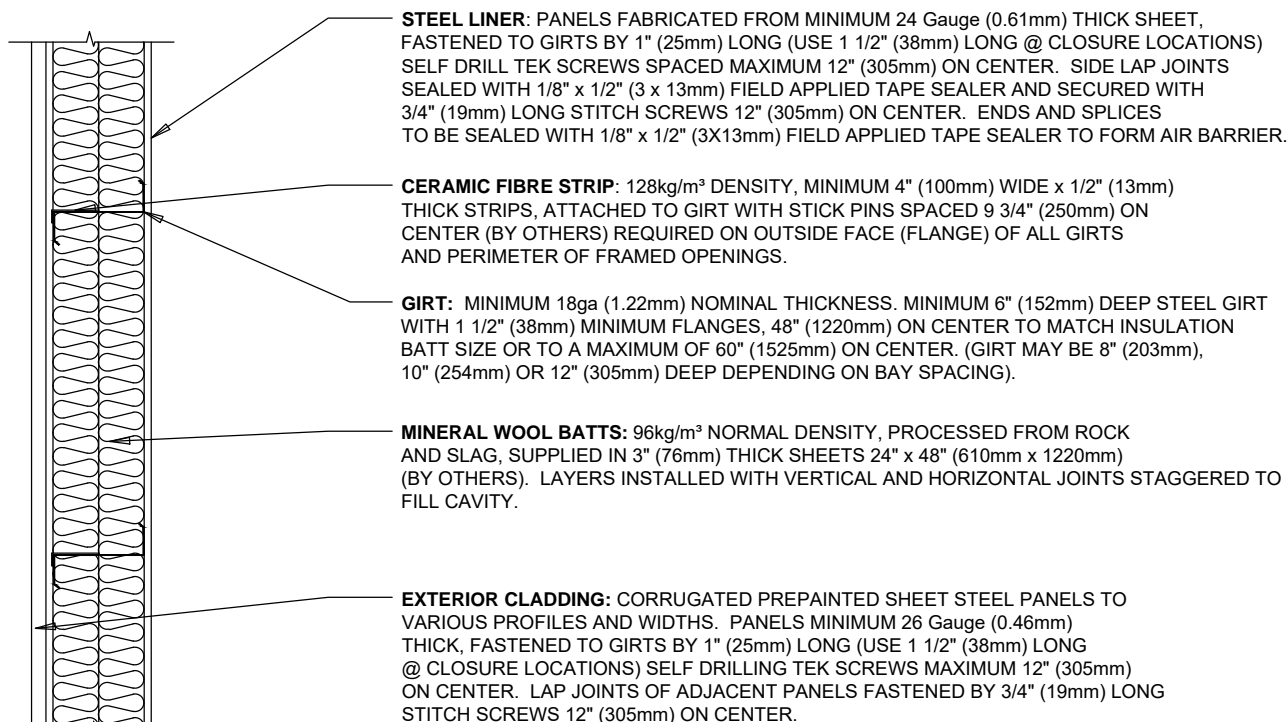
**TWO-HOUR FIRE RATED WALL ASSEMBLY** (MEETS ULC DESIGN NO. W606)

- \* 24 GAUGE (0.61mm) MINIMUM EXTERIOR WALL PANEL C/W TEK SCREWS AT 12" (305mm) O.C. AND STITCH SCREWS AT 12" (305mm) O.C.
- \* GIRT STRUCTURAL SUPPORT MINIMUM 18ga (1.22mm) NOMINAL THICKNESS.
- \* GIRT SPACING OF 48" (1220mm) TO MATCH MINERAL WOOL BATT SIZE OR TO A MAXIMUM OF 60" (1524mm) O.C.
- \* 1/2" (13mm) CERAMIC FIBER STRIP LOCATED ON OUTSIDE GIRT FACE (FLANGE)
- \* 24 GAUGE (0.61mm) MINIMUM FULL HEIGHT LINER PANEL WITH MASTIC SEALER TAPE ON SEAM LINES AND ENDS, C/W TEK SCREWS AT 12" (305mm) O.C. AND STITCH SCREWS AT 12" (305mm) O.C.

**NOTES:**

- Design No. W605 1 h can be used with an Equivalent Opening Factor at 2 h ( $F_{EO}$ ) = 0.02
- See CSSBI FPB-20: Fire Protection Bulletin #20: Fire-Rated Exterior Sheet Steel Walls & FPB-24: Fire Protection Bulletin #24: New (and Better) Limiting Distance Requirements in 1995 NBCC, for additional information on Limiting Distance Requirements for NBCC
- Thermal modeling of fire rated assemblies completed - See MH Building Envelope Thermal Bridging Guide, for Zones based on NECB & CSSBI-B20-15 Thermal Transmittance of Insulated Sheet Steel Wall and Roof Assemblies
- See UL Product IQ BXUVC for other assemblies, including: bearing exterior walls; Design No. U418 & U425 and interior partitions; Design No. W610 1h & W611 2h

## ONE-HOUR FIRE RATED WALL ASSEMBLY (MEETS ULC DESIGN NO. W605)



## TWO-HOUR FIRE RATED WALL ASSEMBLY (MEETS ULC DESIGN NO. W606)

